

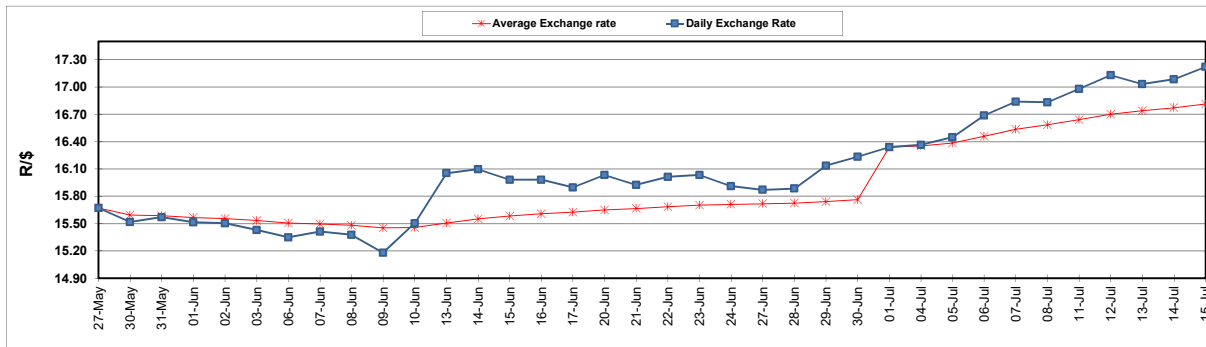
	PETROL 95 ULP	PETROL 93 ULP & LRP	DIESEL 0.05%	DIESEL 0.005%	ILL. PAR.
GAUTENG PUMP PRICE (SA c/l) AS FROM 06/07/2022	2,674.000	2,631.000	-	-	-
WHOLESALE PRICE (SA c/l) AS FROM 06/07/2022	-	-	2,540.440	2,552.840	1,986.288
SINGLE NATIONAL MAXIMUM RETAIL PRICE	-	-	-	-	2,623.000
BASIC FUEL PRICE - 15/07/2022 (SA c/l)	1,387.882	1,364.396	1,611.112	1,621.066	1,636.420
PRESS RELEASE CONTRIBUTION TO BFP 06/07/2022 - 15/07/2022 (SA c/l)	1,689.410	1,646.410	1,763.630	1,776.030	1,768.128
UNIT OVER/(UNDER) RECOVERY - 01/07/2022 (SA c/l)	301.528	282.014	152.518	154.964	131.708
AVERAGE BASIC FUEL PRICE 01/07/2022 - 15/07/2022	1,523.588	1,478.800	1,624.009	1,633.824	1,624.710
AVERAGE UNIT OVER/(UNDER) RECOVERY 01/07/2022 - 15/07/2022	116.185	123.428	97.075	99.933	98.146

### ANALYSIS MOVEMENT OF AVERAGE OVER/(UNDER) RECOVERY

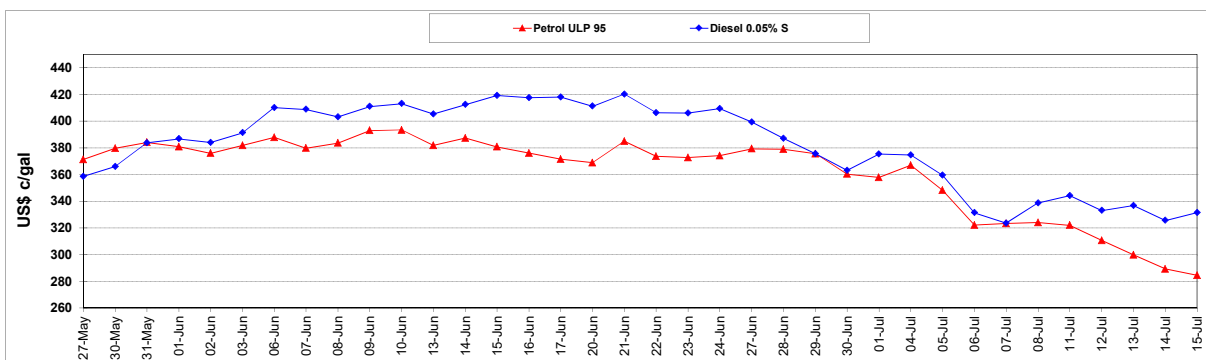
	PETROL 95	PETROL 93	DIESEL 0.05%	DIESEL 0.005%	ILL. PAR.
- MOVEMENT IN INTERNATIONAL PRODUCT PRICES	211.391	215.834	198.556	202.026	199.669
- MOVEMENT IN EXCHANGE RATE	(95.205)	(92.406)	(101.480)	(102.093)	(101.524)
AVERAGE UNIT OVER/(UNDER) RECOVERY 01/07/2022 - 15/07/2022	116.185	123.428	97.075	99.933	98.146

### R/\$ EXCHANGE RATE - (R/\$17.2200 - 15/07/2022)

#### EXCHANGE RATE USED IN BASIC FUEL PRICE



#### INTERNATIONAL PRODUCT PRICES OF BASKET USED IN BASIC FUEL PRICE



#### BASIC FUEL PRICE IN SA CENTS PER LITRE

